



THE NATIONAL EDUCATION SOCIETY OF KARNATAKA (REG.), BASAVANAGUDI, BANGALORE - 4  
**THE NATIONAL DEGREE COLLEGE, BAGEPALLI**  
CHICKABALLAPURA DISTRICT, PIN 561 207

Affiliated to Bangalore North University & Accredited 'B+' Grade by NAAC  
E-mail: [nationaldegreecollegebagepalli@gmail.com](mailto:nationaldegreecollegebagepalli@gmail.com)

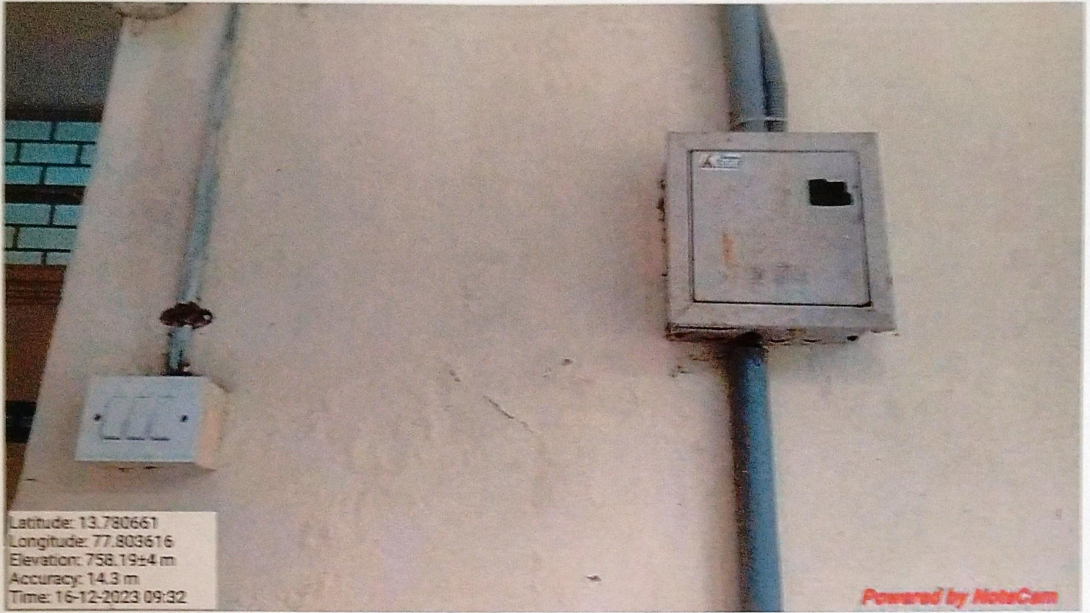
7.1.2 - The Institution has facilities for alternate sources of energy and energy conservation measures

USE OF LED BULBS/ POWER-EFFICIENT EQUIPMENT



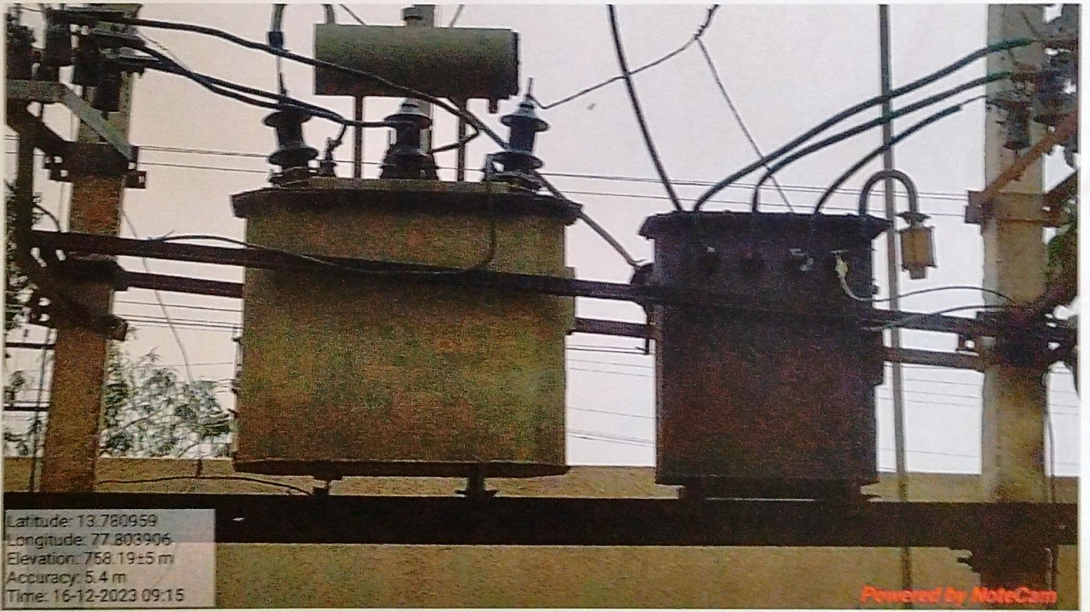
*H.S.*  
**PRINCIPAL**  
**THE NATIONAL COLLEGE**  
Bagepalli, Chikkaballapur Dist.





Latitude: 13.780661  
Longitude: 77.803616  
Elevation: 758.19±4 m  
Accuracy: 14.3 m  
Time: 16-12-2023 09:32

Powered by NoteCam

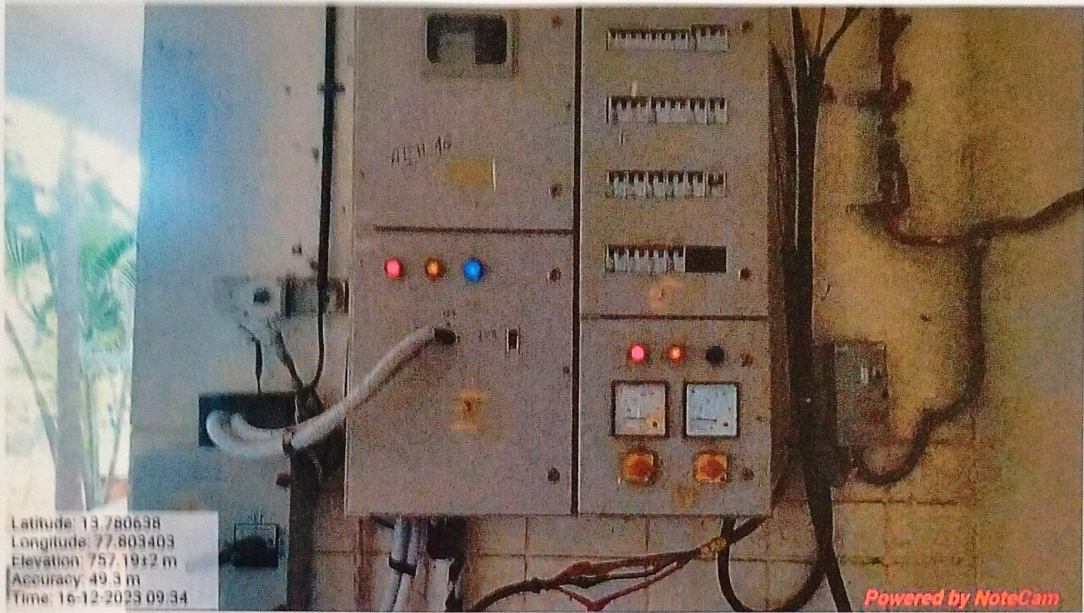


Latitude: 13.780959  
Longitude: 77.803906  
Elevation: 758.19±5 m  
Accuracy: 5.4 m  
Time: 16-12-2023 09:15

Powered by NoteCam

*M.S.*  
**PRINCIPAL**  
**THE NATIONAL COLLEGE**  
Bagepalli, Chikkaballapur Dist





Latitude: 13.780638  
Longitude: 77.803403  
Elevation: 757.1912 m  
Accuracy: 49.3 m  
Time: 16-12-2023 09:34

Powered by NoteCam



Latitude: 13.780143  
Longitude: 77.803806  
Elevation: 757.49113 m  
Accuracy: 74.0 m  
Time: 14-02-2024 12:07

Powered by NoteCam

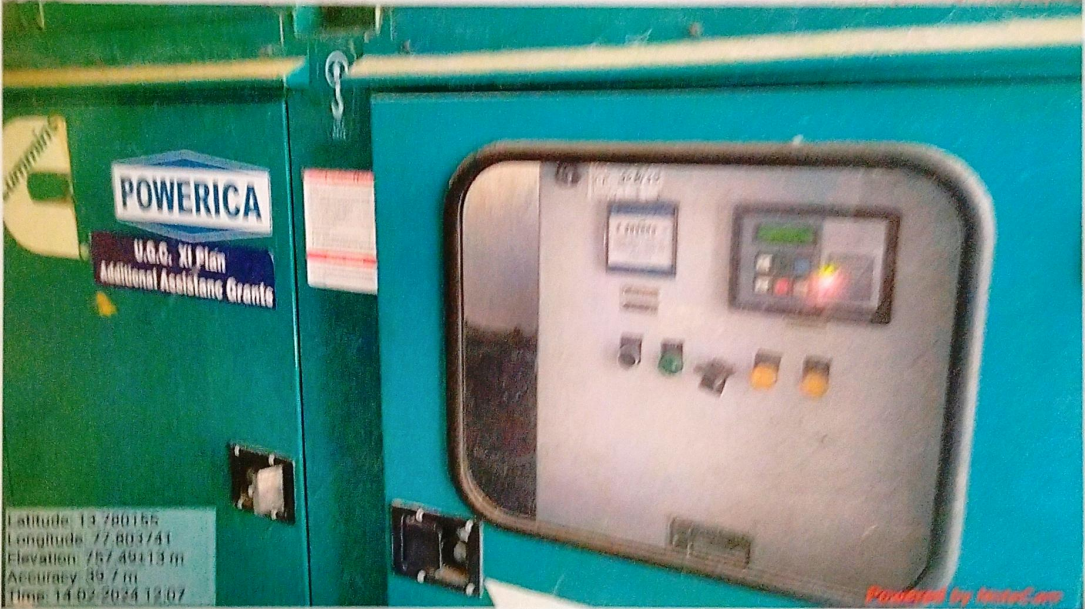
*[Handwritten Signature]*  
**PRINCIPAL**  
**THE NATIONAL COLLEGE**  
Bagepalli, Chikkaballapur Dist





Latitude: 13.790155  
Longitude: 77.803741  
Elevation: 767.49113 m  
Accuracy: 39.7 m  
Time: 14.02.2024 12:07

Powered by [AquaCare.com](http://www.AquaCare.com)



Latitude: 13.790155  
Longitude: 77.803741  
Elevation: 767.49113 m  
Accuracy: 39.7 m  
Time: 14.02.2024 12:07

Powered by [AquaCare.com](http://www.AquaCare.com)

*M.S.*  
**PRINCIPAL**  
**THE NATIONAL COLLEGE**  
Bagepalli, Chikmagalur Dist.